

Ancillary Components

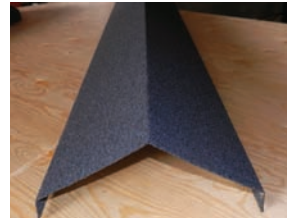


2 Part Barge
for lean to ends
or gable fronts
barge.
also Soaker tray
for under tile.



**Colour Matching
Repair Kit**

**Hip & Ridge
Cover**

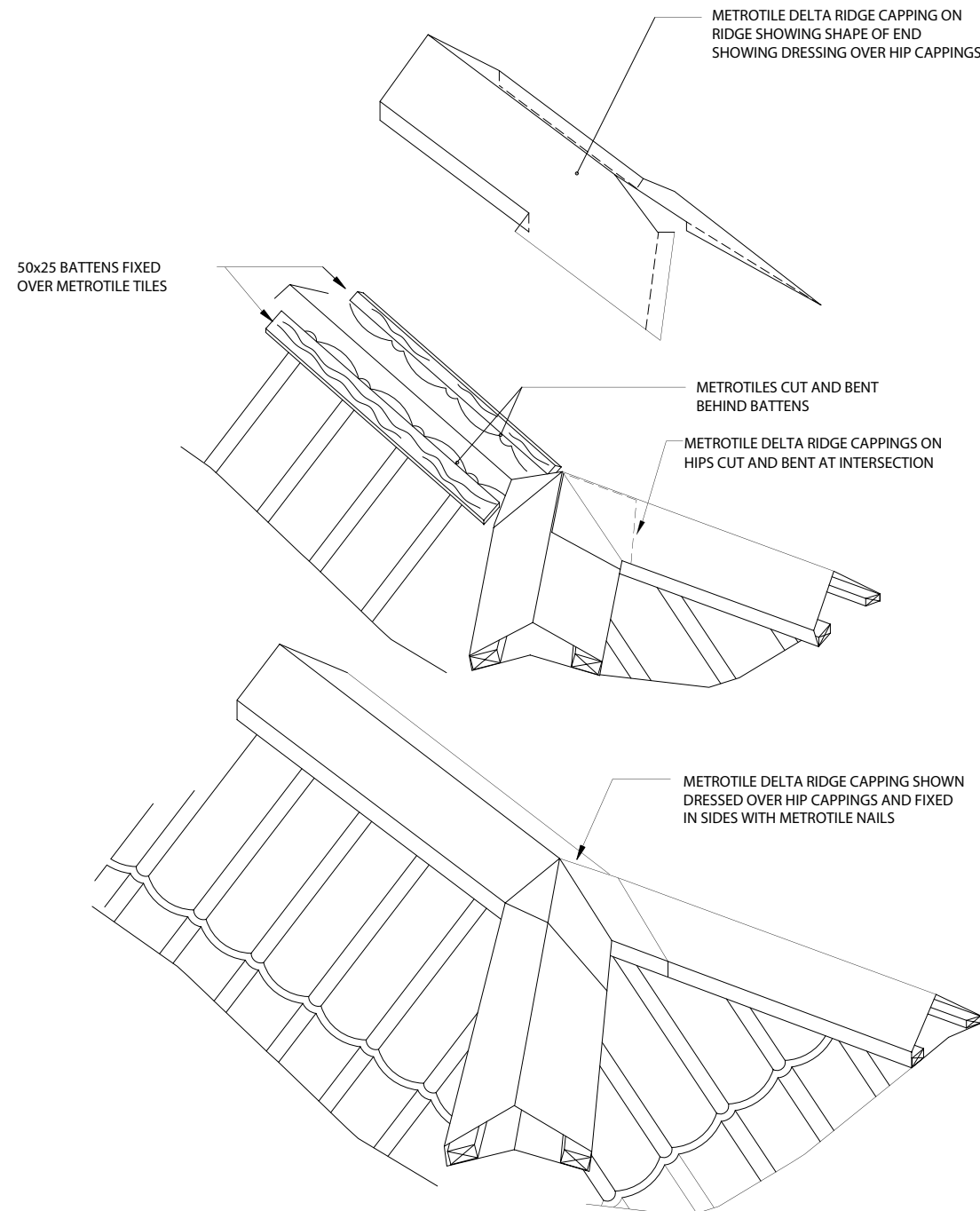


5 Way Ridge joint cover for
standard 3 segment Victorian
& 135° hip end cap.

3 Way Y joint for standard
Edwardian & 90° hip
end cap.



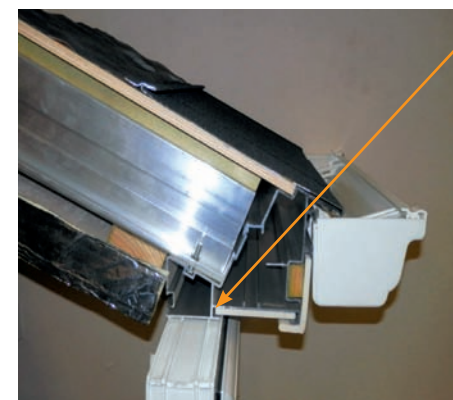
Ridge Detail if unable to use 3 & 5 Way Jointers



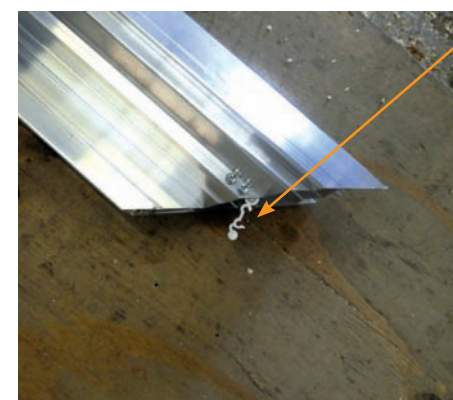
INSTALLATION GUIDE



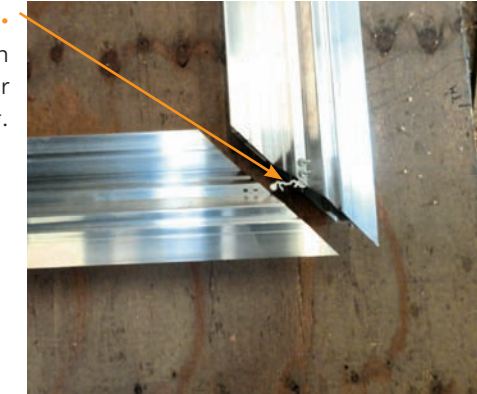
01. Identify the ring beam and make sure the 100mm soffit board is fitted before fitting ring beam on to window frames as this can not be fitted afterwards.



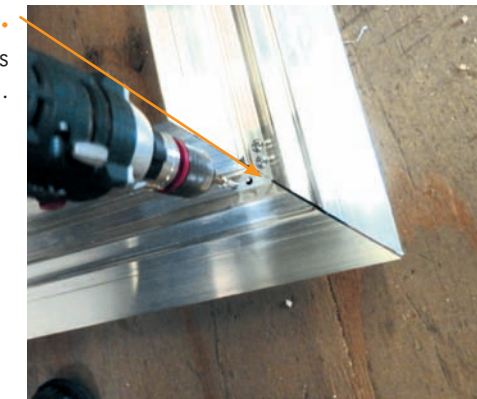
02. Fix front edge of ring beam inline with front face of windows so that no bare aluminium is showing. For 60mm frame, fix same way but ring beam will overhang 10mm on inside of window frame. This will later be covered with insulation.



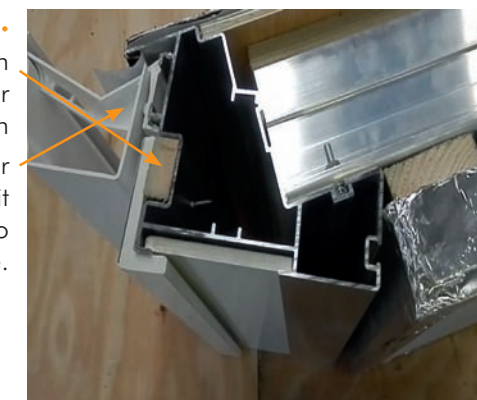
03. Corner cleats will be fitted at factory in to ring beam



04. Slide the next section of ring beam together in to corner cleat.



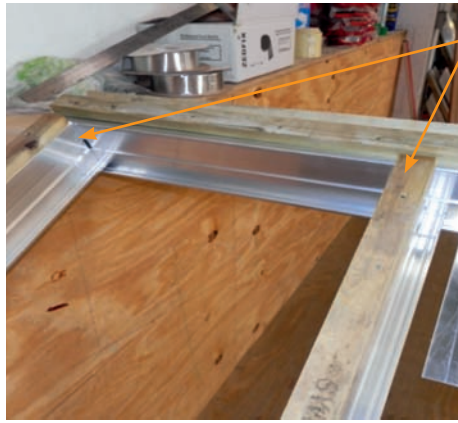
05. Fix using the screws provided.



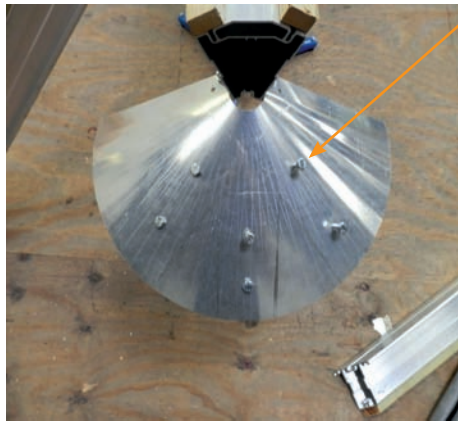
06. Fit fascia board with poly pins on to timber batten
Clip on gutter brackets and then fit gutter as it's easier to do so at this stage.



07. Fit all rafters and hips as you would do on a conventional conservatory roof.
See roof layout for rafter & hip positions.



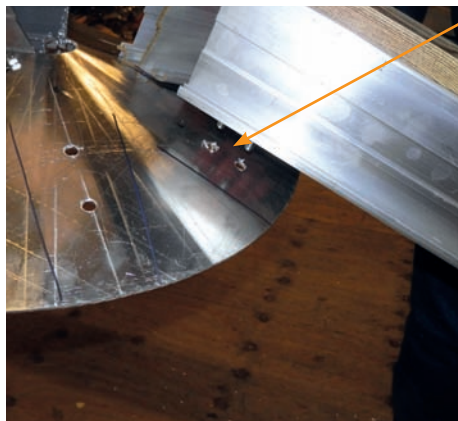
08. Once you have the rafters supporting the main body of the ridge start to slide all hip section on to ridge end plate using 13mm bolts supplied.



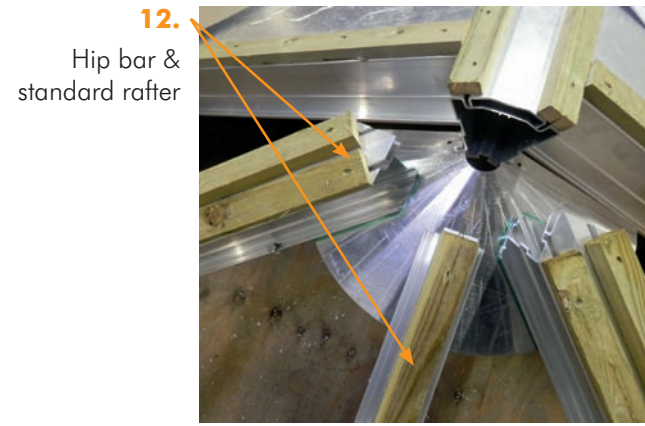
9. Ridge End Plate showing 13mm bolts located.



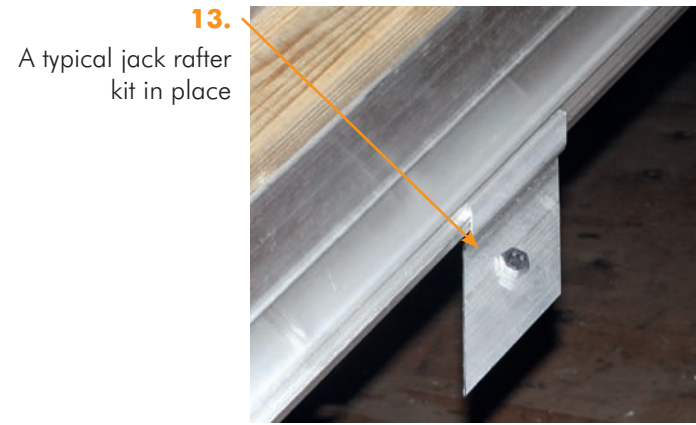
10. Secure Hips into Ridge End Plate using 13mm bolts supplied.



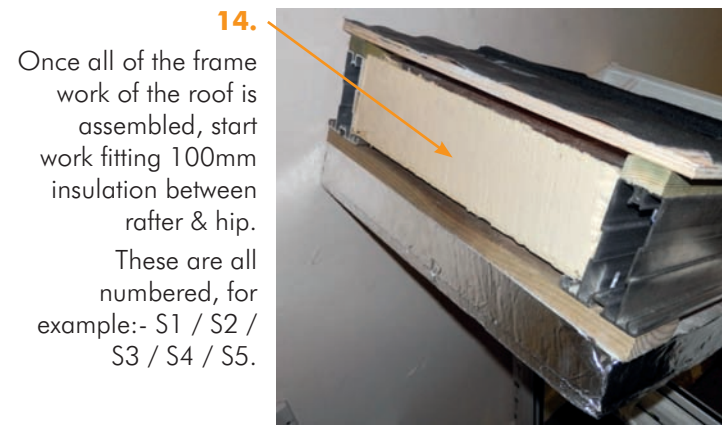
11. Followed by standard rafter again using 13mm bolts supplied.



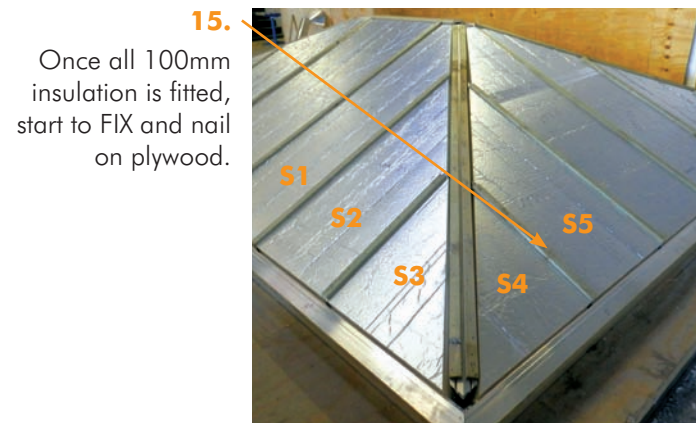
12. Hip bar & standard rafter



13. A typical jack rafter kit in place



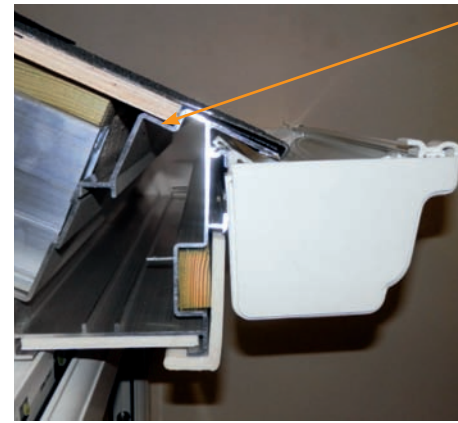
14. Once all of the frame work of the roof is assembled, start work fitting 100mm insulation between rafter & hip. These are all numbered, for example:- S1 / S2 / S3 / S4 / S5.



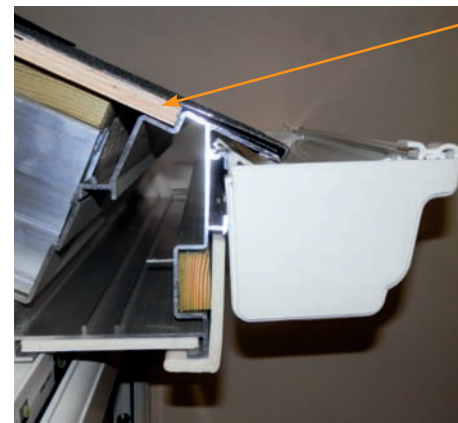
15. Once all 100mm insulation is fitted, start to FIX and nail on plywood.



16. Cover the entire roof with 12mm plywood, fixing at the same time with either nails or screws onto hips & rafters using a minimum 35mm nail or screw (not supplied).



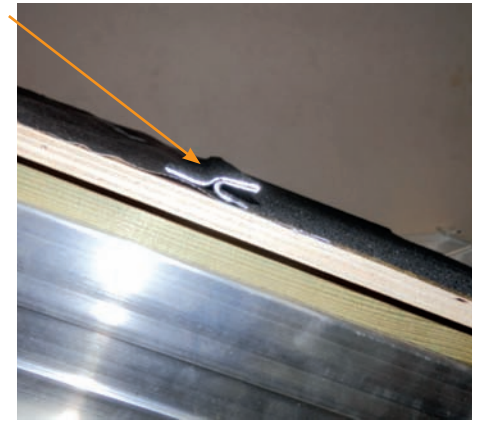
17. Fix plywood in to bottom of ring beam with self drilling screws.



18. Once the plywood is fitted, cover the roof with breathing felt. Ensure at least 50mm of felt runs in to the gutter, this can be trimmed back later.



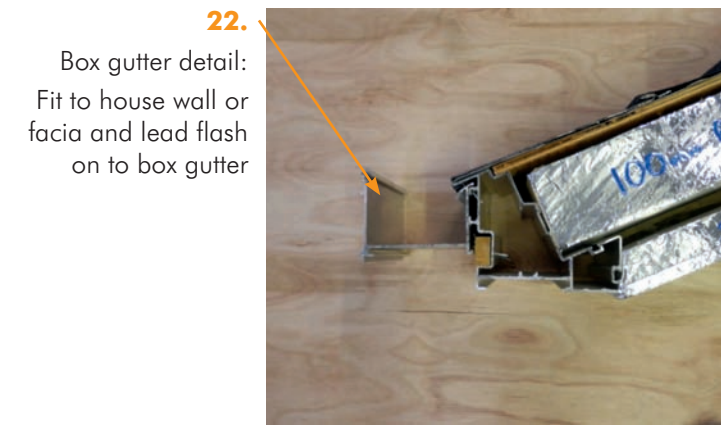
19. When the roof is felted, fix tiles in to the ring beam, hook & continue to tile the complete roof.



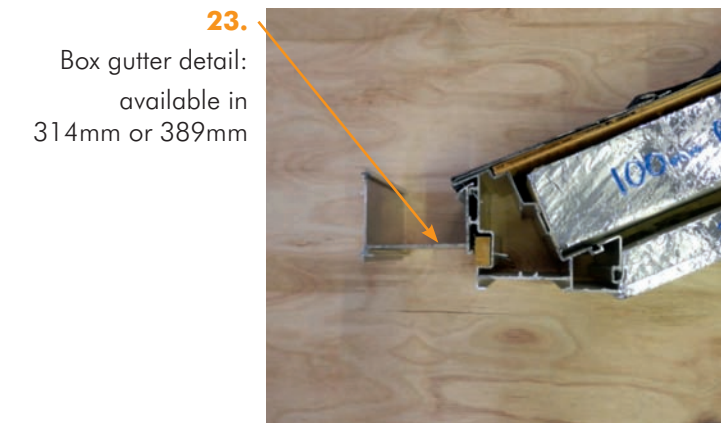
20. Fix each tile with eather screws or nails (minimum 35mm) at the top of each tile. Use at least 4 nails or screws per tile.



21. Fix timber batten on for ridge & hip.



22. Box gutter detail: Fit to house wall or fascia and lead flash on to box gutter



23. Box gutter detail: available in 314mm or 389mm